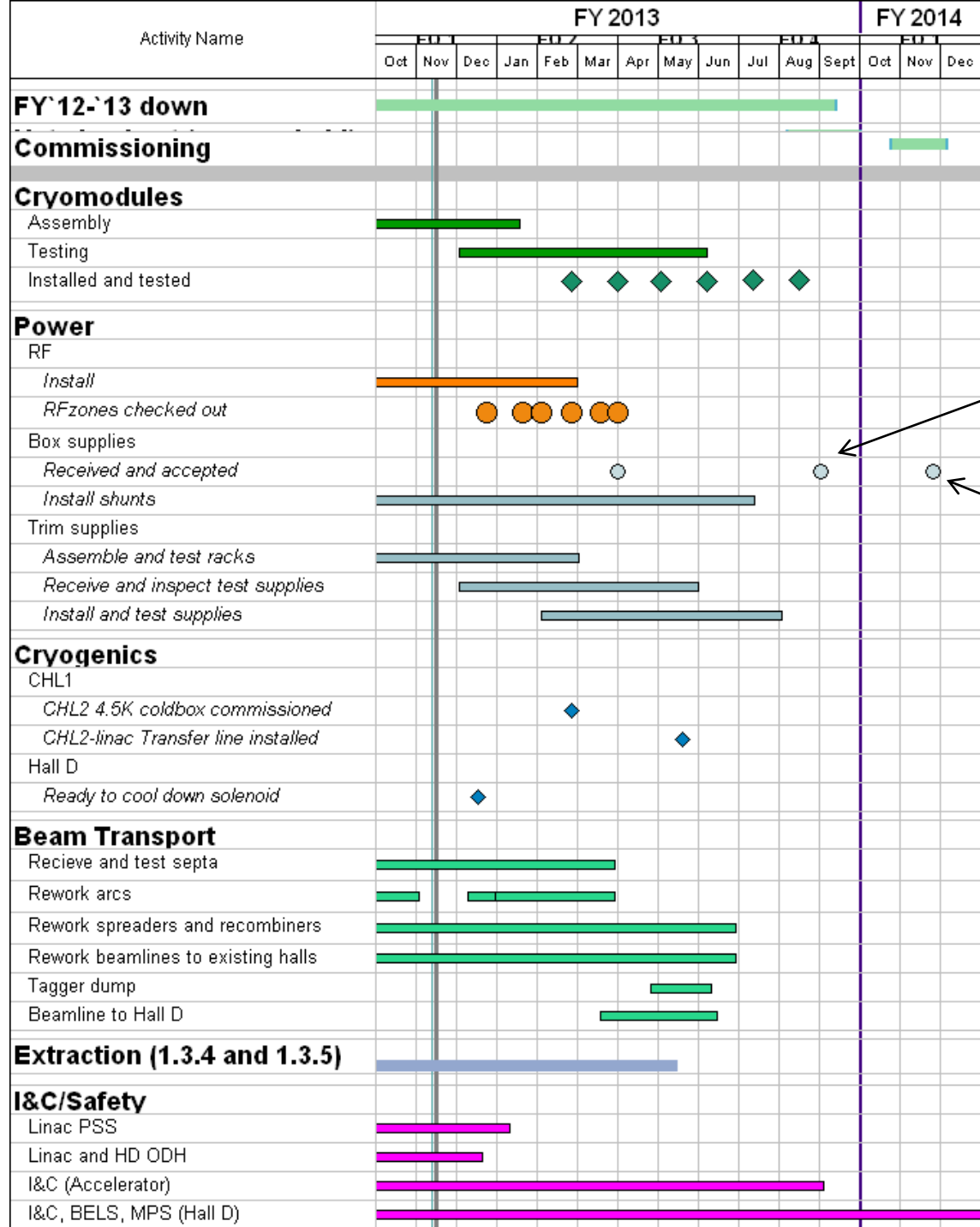


12 GeV Accelerator

Musts for 2.2GeV/pass beam

- Old zones
- All new zones
- CHL1 and CHL2
- Injector
- 1S, 1A, 1R, 2S, 2A



Final supply for 1-pass

Supplies for 3-pass

Comments

Cryomodules: Schedule is tight (~2mon float to beam)

- Delay of CMTF start past early Jan will delay cm commissioning completion even later

Power:

- RF & trims have good float
- Box supply schedule is tight; depends on vendor performance
 - Contract has bonus for early delivery

Cryo: Looks ok

- Have concern about proposed late-down test of 2K coldbox might bring 11th hour surprise
 - Resources to do it earlier not clear
 - Earlier would delay completion of cryomodule commissioning
 - Mitigation that's being followed: test as far as possible w/o being cold

BT: OK; updated plan will be in new baseline

- MT profile ok
- Plan keeps 2 alignment crews busy until end of June

Extraction and I&C/Safety: OK